

# Parent Voice

28<sup>th</sup> November 2022-Leadership and management and Behaviour



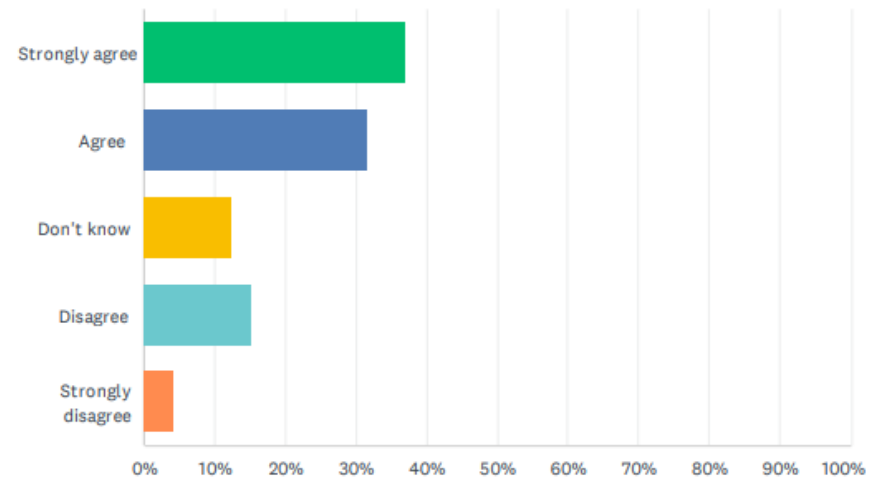
# Leadership and Management

- ▶ I think the school is very well led and managed. You all strive to listen and improve so that's great!
- ▶ As a new parent to Lenham Primary I would say yes on the whole. Sometimes parents could do with more notice about upcoming events as communication sometimes feels rushed.
- ▶ I agree the school is well led and managed.
- ▶ Small school family feel about it where leadership know all the pupils names. My child feels valued.
- ▶ High expectations. Happy school with a strong sport ethos. Good teaching. Strong and positive ethos with behaviour- children are friendly and polite and are equipped to deal with things they don't like ie the I messages.

# Leadership and Management

## Q10 This school is well led and managed

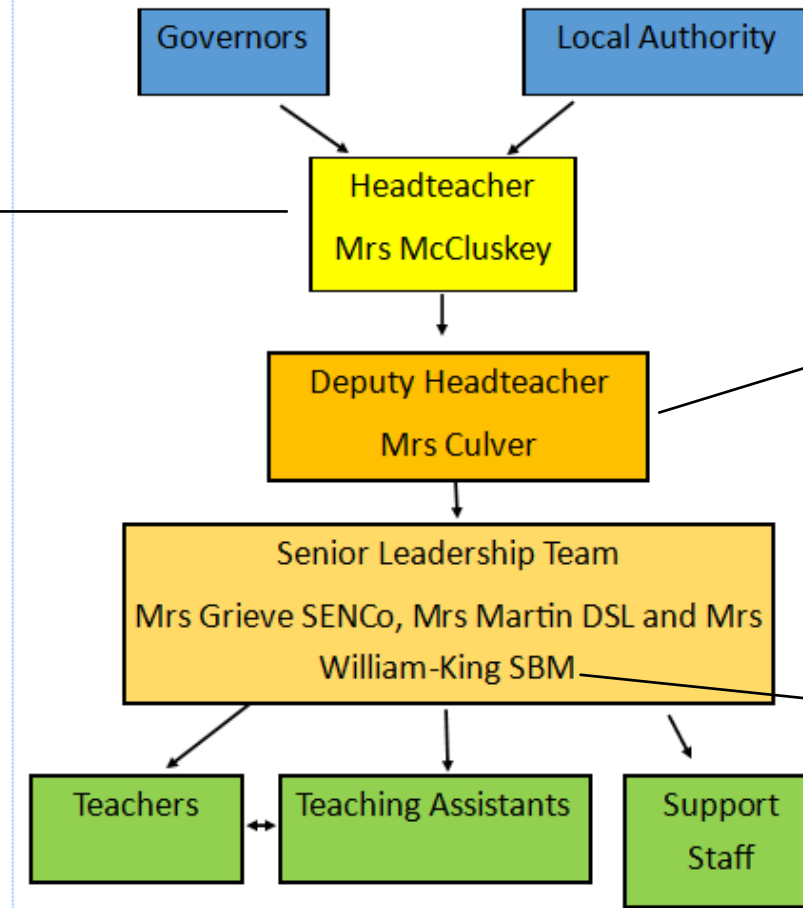
Answered: 73 Skipped: 0



ANSWER CHOICES	RESPONSES	
Strongly agree	36.99%	27
Agree	31.51%	23
Don't know	12.33%	9
Disagree	15.07%	11
Strongly disagree	4.11%	3
<b>TOTAL</b>		<b>73</b>

# What does Leadership and Management look like at Lenham Primary School?

Health and Safety  
 Finance  
 Personnel  
 Emergency planning  
 Contract management  
 Curriculum  
 Data  
 Monitoring  
 Teaching- R and Phonics  
 Attendance  
 Admissions  
 Working with Governors, LA  
 Policies  
 DSL



Curriculum  
 Assessment  
 Teaching management  
 Monitoring  
 Maths  
 DSL  
 Attendance  
 Policies  
 Communication  
 Teaching- Yr 6  
 Supporting pupils  
 Working with Governors, LA  
 Policies  
 DSL

Managing budget  
 Personnel  
 Finance  
 Premises

# Feedback from survey

- Communication

We communicate with parents in a variety of ways.

1. Website
2. Weekly bulletin
3. Termly Newsletter- welcome back
4. Termly Newsletter- end of term celebrating learning
5. Emails
6. Class pages
7. Twitter

- Linked to behaviour

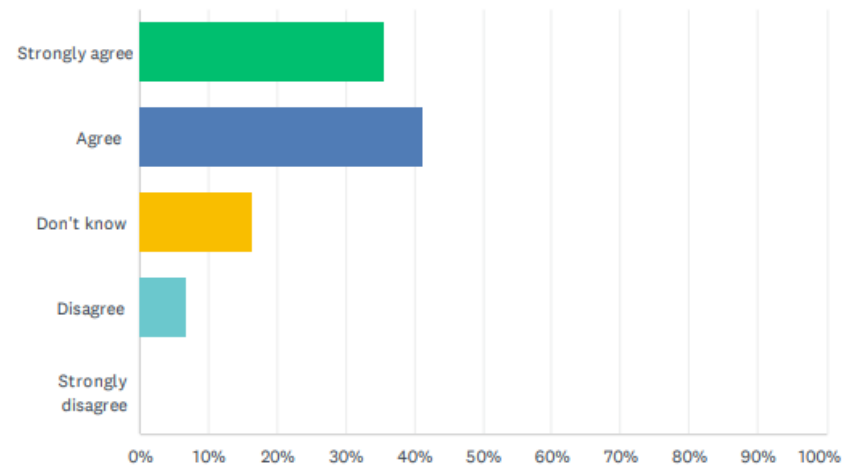
# Behaviour

- ▶ Totally agree. My daughter never complains about bad behaviour in her lessons.
- ▶ The family feeling ethos of the school follows through with this so far from our experience

# Behaviour

## Q8 This school makes sure its pupils are well behaved

Answered: 73 Skipped: 0



ANSWER CHOICES	RESPONSES	
Strongly agree	35.62%	26
Agree	41.10%	30
Don't know	16.44%	12
Disagree	6.85%	5
Strongly disagree	0.00%	0
<b>TOTAL</b>		<b>73</b>

# How do we deal with behaviour?

## ▶ Behaviour policy

- PRIDE values
- Lots of praise- marking, written, sharing, website/twitter, stickers, seeing SLT, learning ladder, house points  
(Learning ladder is for learning behaviours)
- Class reward
- Wow wall
- Responsibility

Aids- hand signal, visual timetable, voice numbers, i-messages, zones of regulation





# How do we deal with behaviour?

## ► Behaviour policy

Managing Behaviour: Version in classrooms more child friendly		
Level	Behaviour seen at this level	What will happen?
1	<ul style="list-style-type: none"> <li>Disrupting the learning of others.</li> <li>Inappropriate use of equipment</li> </ul>	<ul style="list-style-type: none"> <li>Spoken to by staff member</li> <li>Comment in book</li> </ul>
2	<ul style="list-style-type: none"> <li>Not being kind- name calling.</li> <li>Continuing to disrupt learning in class</li> <li>Continuing to not be safe, kind or listening.</li> <li>Inappropriate behaviour - playing roughly fighting</li> <li>Not using equipment correctly</li> </ul>	<ul style="list-style-type: none"> <li>Moved down learning ladder</li> <li>Moved down the learning ladder</li> <li>Time out given</li> <li>Parents spoken to</li> </ul>
3	<ul style="list-style-type: none"> <li>Refusing</li> <li>Continuing to disrupt learning in class</li> <li>Refusal</li> <li>Continuing to not be safe, kind or listening.</li> <li>Continuing inappropriate behaviour - playing roughly or fighting</li> <li>Repeated inappropriate use of equipment</li> </ul>	<ul style="list-style-type: none"> <li>Move down learning ladder</li> <li>Moved in classroom</li> <li>Sent in to see SLT.</li> <li>Parents spoken to</li> <li>Behaviour chart</li> </ul>
If a child goes to the bottom of the learning ladder and lands on the red, they are sent to Senior Leadership Team. The SLT will decide whether to implement stage 4 or 5.		
4	<ul style="list-style-type: none"> <li>Reaching the bottom of the learning ladder.</li> <li>Refuses to apologise or lies about incident</li> <li>Sustained poor behaviour which affects the learning of others</li> <li>Still not completing Home Learning Regularly after contact with parents.</li> </ul>	<ul style="list-style-type: none"> <li>Pupil sent to SLT.</li> <li>Expecting work to be completed at break or lunchtime.</li> <li>Playtime or breaktime is missed.</li> <li>Telephone call to parents to inform them and behaviour is logged.</li> </ul>
5	<ul style="list-style-type: none"> <li>Mis-use of technology</li> <li>Fighting</li> <li>Vandalism</li> <li>Leaving the classroom without permission</li> <li>Directed unacceptable language</li> </ul>	<ul style="list-style-type: none"> <li>SLT involvement</li> <li>Limited playtime/ no playtime</li> <li>Behaviour contract</li> <li>Lunch club</li> <li>Report</li> <li>Parent Meeting</li> </ul>
In line with our Anti-Bullying Policy we take all matters of Homophobia, Racism, discrimination and Bullying very seriously. If a situation occurs with will initially be investigated by the Class Teacher and SLT will be involved. The appropriate consequence will then be applied and behaviour will be logged.		
If a child has regular occurrences of a behaviour in a short period of time a greater level can be applied.		
If behaviour is persistent over time an internal seclusion or fixed term exclusion can take place, this will be implemented for the most serious behaviour.		
This is not a comprehensive list of all behaviours- levels and consequences may need changing, this will be shared through discussion with parents.		



# Bullying

## Responding to bullying

The following steps may be taken when dealing with all incidents of bullying reported to the school:

- o If bullying is suspected or reported, the incident will be dealt with immediately by the member of staff who has been approached or witnessed the concern.
- o The school will provide appropriate support for the person being bullied - making sure they are not at risk of immediate harm and will involve them in any decision-making, as appropriate.
- o A member of staff will interview all parties involved.
- o The DSL will be informed of all bullying issues where there are safeguarding concerns.
- o The school will speak with and inform other staff members, where appropriate.
- o The school will ensure parents/carers are kept informed about the concern and action taken, as appropriate and in line with child protection and confidentiality policies.
- o Sanctions, as identified within the school behaviour policy, and support will be implemented in consultation with all parties concerned.
- o If necessary, other agencies may be consulted or involved, such as the police, if a criminal offence has been committed, or other local services including early help or children's social care, if a child is felt to be at risk of significant harm.
- o Where the bullying of or by pupils takes place off school site or outside of normal school hours (including cyberbullying), the school will ensure that the concern is fully investigated. If required, the DSL will collaborate with other schools. Appropriate action will be taken, including providing support and implementing sanctions in school in accordance with this policy and the school's behaviour policy.
- o A clear and precise account of bullying incidents will be recorded by the school in accordance with existing procedures. This will include recording appropriate details regarding decisions and action taken.

## Support

- Meeting parents
- Social groups
- Helping split children
- Emotional check in
- Play groups
- Opportunities to talk
- Trusted adult
- Lunch clubs
- Biscuit club